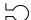

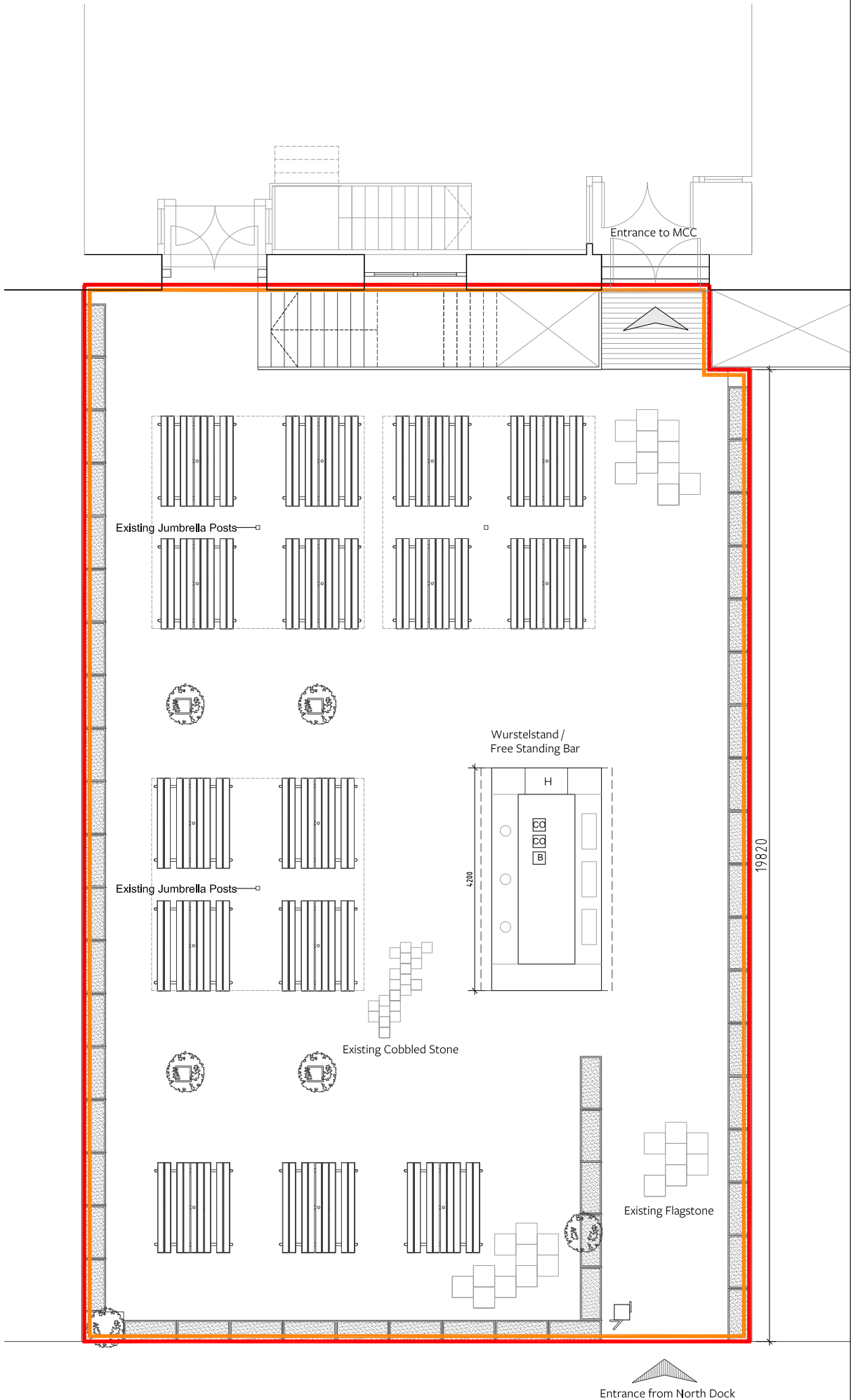


1. Licensable activities may take place anywhere within the red line.
2. Any detail not required by the regulations is indicative only and subject to change without notice.
3. Fire safety equipment locations are indicative only and may change on advice from the fire service or following a fire risk assessment.

Fire Protection	
Installation of an Automatic fire detection system to be fitted throughout in accordance with BS5839 Part 1, 2002. The escape Lighting system should comply with BS5266: Part1, 1999.	
PP	Emergency Push pad with sign
B	Wall mounted Fire blanket in container
CG	2Kg wall mounted Carbon Dioxide Fire Extinguisher
W	9 litre wall mounted water fire extinguisher
CP	Maintained Fire alarm call point location
EL	Maintained Emergency light
SI	Illuminated exit sign over door
SD	Ceiling Mounted Smoke Detector
HD	Ceiling mounted Heat Detector
SN	Staff action notice position
M	Twin high tower lights
FG	Fire Door keep clear sign located on direction of opening side door
L	Keep Door Locked Sign located on direction of opening side door
1/2F	Half hour fire door including intumescent smoke seal strips and positive overhead door closures, fire stops and sign
VP	Vision panel in door comprising FR glass and hw beads in intrumescent paste Minimum size of vision panel 250mm dia.
FE	Emergency exit sign indicating direction of means of escape
	Fire alarm sounder
Life systems contractor to ensure strict compliance to local and national criteria at design stage. The keys and symbols on this layout should be noted and modified if required.	
	Location of Automatic Sprinkler Head
1F	One hour fire door including intumescent smoke seal strips and positive overhead door closures, fire stops and sign

— : Extent of Premises

— : Area Serving Alcohol / Hot Food



baseassociates

Notes: This drawing is the copyright of hebaseem limited. Figured dimensions to be taken in preference to those scaled. All dimensions to be checked on site and taken in preference to those shown. The drawings are indicative only and subject to change following a detailed survey. Not to be reproduced, retained or disclosed to any unauthorised person either wholly or in part without written permission. The scheme is subject to change following input from relevant consultants during the design process.

6 Auckland Street
London SE11 5AD
+44 (0)20 7840 0150
www.baseassociates.co.uk

© 2018 Hebaseem

REV: COMMENT:

DATE:

SCALE: 1:100 @ A3

00 01 02 03 04 05
Metres



Feb 2019

Licensing Terrace Plan

DRAWING NUMBER:

Project No: 0504 RIBA Stage: 2 Series: U Extension: 0 Drawing No: 101 Revision: 00

CLIENT: Munich Cricket Club Ltd.

PROJECT:
Unit E2, West India Quay, E14 4AE

Licensing